

Notice to Mariners

Scottish Hydro Electric Power Distribution (SHEPD)

PH003762 Skye-Uist Replacement

Date of Issue: 13th May 2026

Notice to Mariners

Please be advised that Jan De Nul Luxembourg S.A. shall be undertaking pre-lay bathymetric survey, 3rd party crossing identification; and subject to licensing, mattresses installation and subsea boulder relocation for the Skye-Uist Replacement project. This in preparation of installation of two new subsea power cables. One between Loch Pooltiel on the Isle of Skye and Loch Carnan on the Isle of South Uist and the other one between Ardmore on the Isle of Skye and Loch Pooltiel on Isle of Skye. The works will be carried out by several vessels which are listed further in this NtM.

An overview of the cable route is shown in **Figure 1**. The working area that will be required for the duration of the route clearance activities is defined as a corridor ± 250 m (\pm meaning “either side”) around the future cable route center line seaward from 10m water depth. The related coordinates are listed in **Table 5**.

Subject to necessary licences being granted, updates will follow in due course re. scheduling of subsequent works.

LEGAL NOTICE

Please be advised that this Notice to Mariners should be treated as official notice of the nature, duration and location of the works which are scheduled to take place. During the period of this notice, we request that you plan your activities around our short-term, temporary activities.

Any failure to remove equipment or entry into the identified location in a manner that would constitute a hazard may be a breach of your duties of safe seamanship as described in the Convention on International Regulations for Preventing Collisions at Sea 1972 and/or the Merchant Shipping Act 1995, and may result in removal of the relevant equipment. Failure to remove equipment or entry into the identified location in a manner that would constitute a hazard may constitute a breach of duty of care at common law, and a failure to protect submarine cables for successful seabed user co-existence under Scotland's National Marine Plan.

SEN shall found on this notice in the event of any damage, loss or disruption arising from failure to heed the information herein.

Schedule of Operations

A summary of the Schedule of Operations for the survey activity is shown below in **Table 1**.

Table 1: Schedule of Operations

Dates	Vessel Scope	Vessel(s)
02 June – 30 June 2026	Route survey and preparation works	MV Trym (IMO 9342724)

Vessel and Equipment Details

The vessels that are currently planned to carry out the marine survey activities are listed in **Table 2** below.

Table 2: Vessel Details





Vessel Photo	Vessel Description
	<p>MV Trym Owner : Sea Shipping Built : 2006 LOA: 73 m Breadth moulded ; 16 m, Max. draft : 5.84 m Call Sign: LNXA3 IMO No: 9342724 MMSI No: 257862000 Flag : Norway</p> <p>Tel : +47 948 97 071 Immarsat : +88 164 417 08477 Email : bridge.trym@seashipping.no</p> <p>Offshore Managment : tr1offman@helixesg.com +44 1224 335 891</p>

Table 3: Equipment Details

Equipment Photo	Equipment Description
	<p>Work-class ROV (WROV) Triton XLS 150hp will be deployed from MV Trym</p> <p>Length: 3 m Width: 1.85 m Height: 2 m Weight in Air: 4,309 kg</p>

Equipment Photo	Equipment Description
	<p>8Te Boulder grab IROV Subsea Will be deployed from MV Trym</p> <p>Dimensions 2.4 m × 2.4 m × 1.5 m high Approx weight in air: 2.5 Te Approx weight in water: 2.2 Te Type 5 Tine, Orange Peel Style Capacity approx 8 Te SWL</p>
	<p>20Te Boulder grab Subsea Tooling Services (STS) 20Te Boulder Grab will be deployed from MV Trym</p> <p>Dimensions 5.0 m × 5.0 m × 3.0 m high Approx weight in air: 7.0 Te Type 6 Tine, Orange Peel Style Capacity approx. 20 Te SWL</p>

Equipment calibration operations may take place out of the defined corridor and these areas will be chosen so as not to interfere with fishing/shipping activity. Intermediate transits depending on operational needs can take place prior to and in between aforementioned activities.

The vessels carrying out the works will be restricted in their ability to manoeuvre and will display the appropriate lights and shapes (two black spheres and in the middle a black diamond shape, in a vertical line). Other vessels are requested to pass at a safe speed and provide a minimum clearance of 500m (COLREGs Rule 16 & 18) from the vessels during marine operations. The vessels will monitor VHF Channel 16 at all times. Mobile contacts for the vessels are listed at the end of this NtM.

Contact Details

Name	Role	Telephone Number
Wouter Callewaert	Jan De Nul Project Manager	+32 479 70 03 13
Nicolas Jeannelle	Jan De Nul Works Manager	+32 499 56 68 42
Nirmal Van Den Bossche	Jan De Nul HQSSE Advisor	+32 471 31 08 47
Gregory Powell	Helix Project Manager	+44 (0) 1243 978207
Steven Fitzjohn	Helix HQSSE Manager	+44 (0) 1224 978206
Alasdair Crawford	SHEPD Project Manager	+44 7436 480 361
Garet Ross	SHEPD Safety Advisor	+44 7471 67 85 36

Fishing Liaison Officers

Fishing liaison for the power cable installation activities will be co-ordinated by Blackhall & Powis Ltd (B&P) fishing liaison consultant. For any commercial fishery queries please contact Tommy Finn, the Director of Marine and Fisheries (+44 778 750 31 19/ tommy.finn@blackhallpowis.com) and/or Michael Sutherland, the Specialist Advisor, Fisheries Liaison, Marine and Offshore (+44 792 848 43 43/ michael.sutherland@blackhallpowis.com). The vessel masters will issue regular broadcasts whilst works are ongoing to ensure minimal disruption and that vessels maintain an appropriate and safe distance.

Distribution List

The Distribution List of the Notice to Mariners is as per the stakeholder list in the Fisheries Liaison and Management Action Plan (FLMAP).

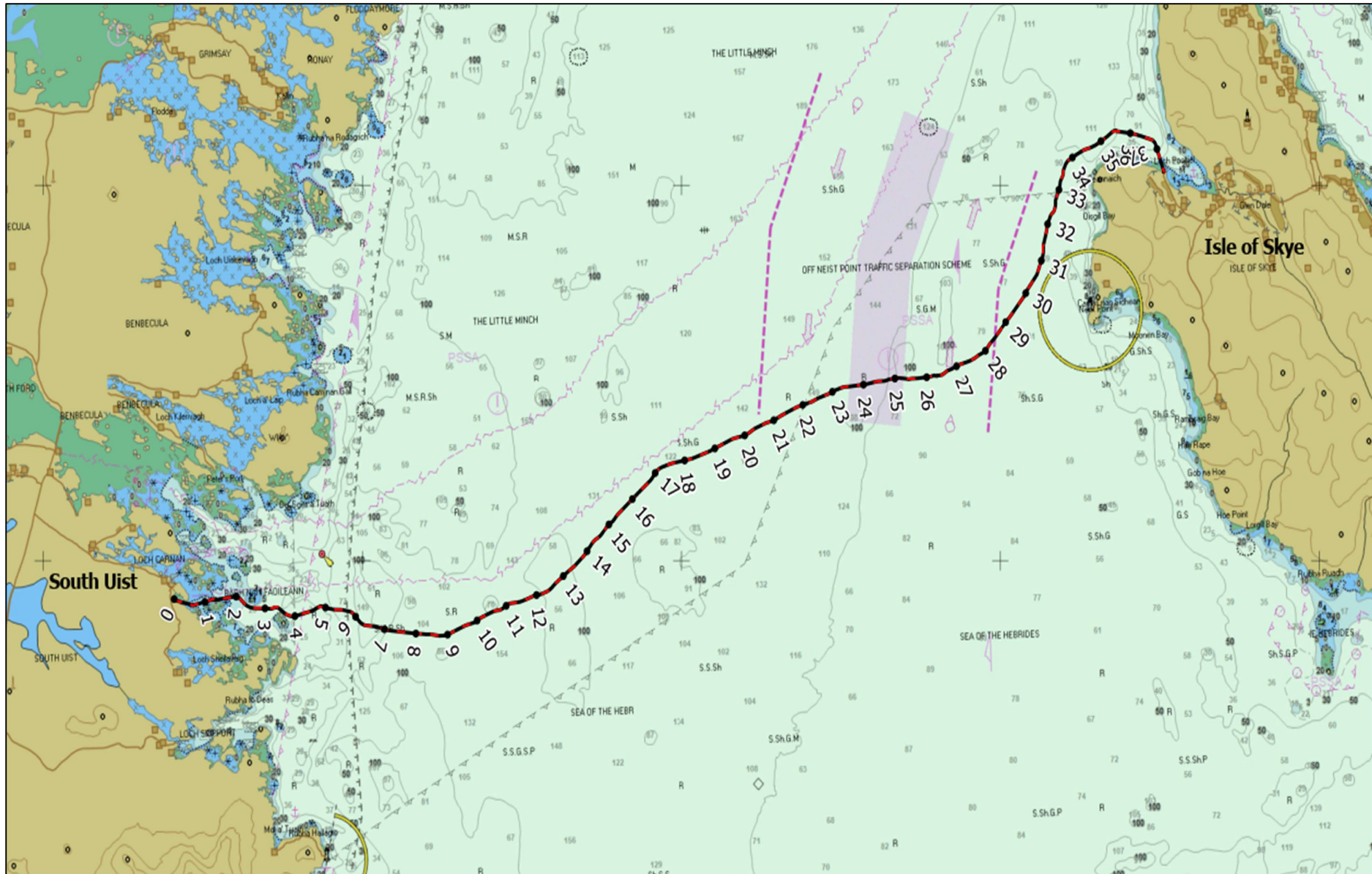


Figure 1: Loch Pooltiel on the Isle of Skye and Loch Carnan on Isle of Skye Cable route Overview

Table 4: Loch Pooltiel on the Isle of Skye and Loch Carnan on Isle of Skye Cable route position

Point	Latitude (Degree)	Longitude (Degree)	Easting (m)	Northing (m)
SSU	WGS84			
1	57° 21.708' N	-7° -16.160' W	604,104.92	6,358,985.77
2	57° 21.677' N	-7° -16.066' W	604,201.50	6,358,930.58
3	57° 21.676' N	-7° -16.060' W	604,206.76	6,358,928.49
4	57° 21.614' N	-7° -15.632' W	604,639.13	6,358,824.76
5	57° 21.614' N	-7° -15.529' W	604,742.67	6,358,827.50
6	57° 21.661' N	-7° -15.204' W	605,065.80	6,358,923.35
7	57° 21.664' N	-7° -15.181' W	605,089.02	6,358,928.75
8	57° 21.683' N	-7° -14.939' W	605,330.49	6,358,969.97
9	57° 21.684' N	-7° -14.904' W	605,366.00	6,358,972.81
10	57° 21.682' N	-7° -14.819' W	605,450.55	6,358,972.03
11	57° 21.684' N	-7° -14.746' W	605,523.78	6,358,976.74
12	57° 21.713' N	-7° -14.262' W	606,007.92	6,359,043.80
13	57° 21.680' N	-7° -14.094' W	606,177.51	6,358,986.39
14	57° 21.623' N	-7° -13.996' W	606,278.79	6,358,884.06
15	57° 21.539' N	-7° -13.653' W	606,626.17	6,358,735.85
16	57° 21.527' N	-7° -13.139' W	607,142.15	6,358,727.60
17	57° 21.532' N	-7° -13.073' W	607,208.84	6,358,737.93
18	57° 21.539' N	-7° -13.029' W	607,252.19	6,358,752.44
19	57° 21.524' N	-7° -12.891' W	607,390.85	6,358,729.41
20	57° 21.445' N	-7° -12.708' W	607,578.42	6,358,586.18
21	57° 21.423' N	-7° -12.626' W	607,661.99	6,358,548.73
22	57° 21.412' N	-7° -12.532' W	607,756.81	6,358,530.48
23	57° 21.402' N	-7° -12.484' W	607,804.86	6,358,512.26
24	57° 21.390' N	-7° -12.451' W	607,838.75	6,358,492.20
25	57° 21.400' N	-7° -12.269' W	608,021.31	6,358,515.30
26	57° 21.415' N	-7° -12.240' W	608,049.42	6,358,543.45
27	57° 21.435' N	-7° -12.172' W	608,115.96	6,358,582.15
28	57° 21.473' N	-7° -11.884' W	608,403.01	6,358,660.75
29	57° 21.494' N	-7° -11.780' W	608,506.41	6,358,701.91
30	57° 21.513' N	-7° -11.708' W	608,577.70	6,358,739.96
31	57° 21.530' N	-7° -11.566' W	608,719.27	6,358,775.31
32	57° 21.526' N	-7° -11.294' W	608,992.38	6,358,775.04
33	57° 21.525' N	-7° -11.268' W	609,017.80	6,358,773.39
34	57° 21.520' N	-7° -11.206' W	609,080.50	6,358,765.29
35	57° 21.503' N	-7° -11.126' W	609,161.66	6,358,736.05
36	57° 21.494' N	-7° -11.101' W	609,187.29	6,358,719.87
37	57° 21.476' N	-7° -10.985' W	609,304.29	6,358,689.24
38	57° 21.476' N	-7° -10.938' W	609,351.54	6,358,691.66
39	57° 21.471' N	-7° -10.873' W	609,416.64	6,358,684.25
40	57° 21.463' N	-7° -10.822' W	609,468.62	6,358,669.42
41	57° 21.460' N	-7° -10.750' W	609,541.02	6,358,666.95
42	57° 21.463' N	-7° -10.722' W	609,568.53	6,358,672.81
43	57° 21.428' N	-7° -10.570' W	609,722.65	6,358,612.13
44	57° 21.364' N	-7° -10.492' W	609,804.26	6,358,495.56
45	57° 21.320' N	-7° -10.413' W	609,885.59	6,358,416.70
46	57° 21.302' N	-7° -10.363' W	609,936.24	6,358,383.51
47	57° 21.289' N	-7° -10.334' W	609,966.26	6,358,361.03
48	57° 21.268' N	-7° -10.291' W	610,010.90	6,358,323.03
49	57° 21.237' N	-7° -10.197' W	610,106.07	6,358,268.39

50	57° 21.201' N	-7° -10.021' W	610,284.82	6,358,205.69
51	57° 21.190' N	-7° -9.929' W	610,377.22	6,358,188.87
52	57° 21.184' N	-7° -9.704' W	610,602.81	6,358,183.69
53	57° 21.183' N	-7° -9.680' W	610,627.61	6,358,182.50
54	57° 21.170' N	-7° -9.429' W	610,879.30	6,358,164.20
55	57° 21.171' N	-7° -9.388' W	610,920.46	6,358,166.89
56	57° 21.173' N	-7° -9.369' W	610,940.10	6,358,170.93
57	57° 21.173' N	-7° -9.315' W	610,993.41	6,358,172.24
58	57° 21.161' N	-7° -9.204' W	611,106.09	6,358,154.73
59	57° 21.160' N	-7° -9.192' W	611,117.62	6,358,152.71
60	57° 21.144' N	-7° -9.056' W	611,254.51	6,358,125.92
61	57° 21.143' N	-7° -9.050' W	611,260.85	6,358,124.75
62	57° 21.096' N	-7° -8.621' W	611,693.25	6,358,049.76
63	57° 21.094' N	-7° -8.590' W	611,725.10	6,358,045.88
64	57° 21.082' N	-7° -8.410' W	611,905.83	6,358,029.75
65	57° 21.082' N	-7° -8.363' W	611,952.49	6,358,031.05
66	57° 21.092' N	-7° -8.246' W	612,069.48	6,358,052.09
67	57° 21.085' N	-7° -8.160' W	612,156.70	6,358,041.65
68	57° 21.079' N	-7° -8.136' W	612,180.31	6,358,031.21
69	57° 21.073' N	-7° -8.102' W	612,215.44	6,358,020.59
70	57° 21.047' N	-7° -7.865' W	612,454.13	6,357,979.36
71	57° 21.052' N	-7° -7.758' W	612,561.52	6,357,990.37
72	57° 21.087' N	-7° -7.577' W	612,740.53	6,358,060.94
73	57° 21.089' N	-7° -7.565' W	612,752.64	6,358,065.27
74	57° 21.101' N	-7° -7.486' W	612,830.96	6,358,090.45
75	57° 21.104' N	-7° -7.472' W	612,844.75	6,358,095.65
76	57° 21.113' N	-7° -7.432' W	612,884.80	6,358,113.03
77	57° 21.116' N	-7° -7.416' W	612,900.87	6,358,119.68
78	57° 21.120' N	-7° -7.396' W	612,920.65	6,358,127.46
79	57° 21.125' N	-7° -7.374' W	612,942.59	6,358,137.12
80	57° 21.136' N	-7° -7.327' W	612,988.58	6,358,159.60
81	57° 21.141' N	-7° -7.304' W	613,011.61	6,358,168.59
82	57° 21.146' N	-7° -7.267' W	613,048.94	6,358,179.71
83	57° 21.167' N	-7° -7.169' W	613,146.24	6,358,220.31
84	57° 21.196' N	-7° -7.062' W	613,251.78	6,358,278.09
85	57° 21.205' N	-7° -7.017' W	613,295.73	6,358,295.75
86	57° 21.228' N	-7° -6.844' W	613,468.26	6,358,342.30
87	57° 21.242' N	-7° -6.774' W	613,538.20	6,358,371.04
88	57° 21.293' N	-7° -6.596' W	613,713.90	6,358,470.76
89	57° 21.300' N	-7° -6.570' W	613,739.49	6,358,483.71
90	57° 21.383' N	-7° -6.200' W	614,106.39	6,358,647.81
91	57° 21.395' N	-7° -6.103' W	614,203.10	6,358,672.85
92	57° 21.397' N	-7° -6.032' W	614,273.78	6,358,678.94
93	57° 21.424' N	-7° -5.882' W	614,422.37	6,358,733.71
94	57° 21.475' N	-7° -5.743' W	614,559.26	6,358,831.49
95	57° 21.493' N	-7° -5.651' W	614,650.65	6,358,867.19
96	57° 21.503' N	-7° -5.449' W	614,852.40	6,358,892.46
97	57° 21.511' N	-7° -5.383' W	614,918.74	6,358,908.61
98	57° 21.599' N	-7° -4.899' W	615,399.42	6,359,085.54
99	57° 21.604' N	-7° -4.826' W	615,471.85	6,359,097.82
100	57° 21.604' N	-7° -4.791' W	615,507.06	6,359,097.24
101	57° 21.607' N	-7° -4.731' W	615,567.53	6,359,105.54

102	57° 21.617' N	-7° -4.665' W	615,633.11	6,359,125.09
103	57° 21.622' N	-7° -4.634' W	615,663.25	6,359,136.80
104	57° 21.647' N	-7° -4.535' W	615,761.30	6,359,184.35
105	57° 21.656' N	-7° -4.503' W	615,792.62	6,359,203.26
106	57° 21.670' N	-7° -4.466' W	615,829.47	6,359,230.39
107	57° 21.681' N	-7° -4.431' W	615,864.38	6,359,251.00
108	57° 21.688' N	-7° -4.401' W	615,893.61	6,359,264.46
109	57° 21.711' N	-7° -4.344' W	615,950.07	6,359,309.67
110	57° 21.725' N	-7° -4.323' W	615,969.68	6,359,335.35
111	57° 21.742' N	-7° -4.291' W	616,001.55	6,359,368.41
112	57° 21.773' N	-7° -4.218' W	616,072.90	6,359,427.13
113	57° 21.798' N	-7° -4.132' W	616,157.36	6,359,476.06
114	57° 21.817' N	-7° -4.028' W	616,260.65	6,359,515.36
115	57° 21.837' N	-7° -3.970' W	616,318.11	6,359,554.45
116	57° 21.874' N	-7° -3.905' W	616,380.83	6,359,623.20
117	57° 21.896' N	-7° -3.860' W	616,425.10	6,359,666.08
118	57° 21.905' N	-7° -3.840' W	616,444.96	6,359,683.08
119	57° 21.913' N	-7° -3.822' W	616,462.45	6,359,699.29
120	57° 21.943' N	-7° -3.763' W	616,519.84	6,359,756.90
121	57° 21.953' N	-7° -3.742' W	616,540.56	6,359,775.84
122	57° 21.985' N	-7° -3.667' W	616,613.31	6,359,836.34
123	57° 22.001' N	-7° -3.634' W	616,646.22	6,359,868.27
124	57° 22.055' N	-7° -3.540' W	616,737.07	6,359,971.00
125	57° 22.066' N	-7° -3.520' W	616,757.27	6,359,990.82
126	57° 22.159' N	-7° -3.305' W	616,966.91	6,360,169.22
127	57° 22.175' N	-7° -3.275' W	616,996.55	6,360,200.54
128	57° 22.310' N	-7° -3.073' W	617,191.41	6,360,457.01
129	57° 22.375' N	-7° -2.931' W	617,330.25	6,360,582.05
130	57° 22.390' N	-7° -2.884' W	617,376.74	6,360,610.24
131	57° 22.439' N	-7° -2.769' W	617,489.78	6,360,704.04
132	57° 22.561' N	-7° -2.554' W	617,698.80	6,360,937.23
133	57° 22.590' N	-7° -2.484' W	617,767.00	6,360,993.74
134	57° 22.603' N	-7° -2.442' W	617,808.64	6,361,018.91
135	57° 22.617' N	-7° -2.407' W	617,842.69	6,361,044.84
136	57° 22.630' N	-7° -2.379' W	617,869.73	6,361,070.44
137	57° 22.640' N	-7° -2.361' W	617,887.87	6,361,090.08
138	57° 22.683' N	-7° -2.294' W	617,952.55	6,361,170.24
139	57° 22.695' N	-7° -2.273' W	617,972.77	6,361,193.77
140	57° 22.707' N	-7° -2.252' W	617,993.46	6,361,216.39
141	57° 22.721' N	-7° -2.222' W	618,022.97	6,361,242.84
142	57° 22.760' N	-7° -2.116' W	618,126.84	6,361,318.78
143	57° 22.768' N	-7° -2.090' W	618,152.51	6,361,334.72
144	57° 22.778' N	-7° -2.052' W	618,189.83	6,361,354.16
145	57° 22.789' N	-7° -2.020' W	618,221.71	6,361,374.84
146	57° 22.804' N	-7° -1.983' W	618,258.05	6,361,403.65
147	57° 22.821' N	-7° -1.948' W	618,291.87	6,361,437.86
148	57° 22.833' N	-7° -1.931' W	618,308.54	6,361,459.37
149	57° 22.848' N	-7° -1.903' W	618,335.81	6,361,488.15
150	57° 22.870' N	-7° -1.852' W	618,385.37	6,361,531.01
151	57° 22.873' N	-7° -1.844' W	618,392.93	6,361,537.23
152	57° 22.881' N	-7° -1.826' W	618,410.47	6,361,550.95
153	57° 22.905' N	-7° -1.782' W	618,453.83	6,361,597.84



154	57° 22.926' N	-7° -1.754' W	618,480.22	6,361,637.58
155	57° 22.975' N	-7° -1.672' W	618,560.06	6,361,730.66
156	57° 23.006' N	-7° -1.605' W	618,625.64	6,361,790.41
157	57° 23.017' N	-7° -1.580' W	618,649.65	6,361,811.59
158	57° 23.124' N	-7° -1.335' W	618,889.08	6,362,016.07
159	57° 23.144' N	-7° -1.287' W	618,936.93	6,362,054.46
160	57° 23.180' N	-7° -1.191' W	619,030.46	6,362,124.90
161	57° 23.199' N	-7° -1.153' W	619,068.09	6,362,161.97
162	57° 23.215' N	-7° -1.129' W	619,091.08	6,362,191.56
163	57° 23.230' N	-7° -1.102' W	619,116.96	6,362,220.74
164	57° 23.253' N	-7° -1.058' W	619,160.24	6,362,263.57
165	57° 23.279' N	-7° -1.023' W	619,193.70	6,362,313.76
166	57° 23.305' N	-7° -1.002' W	619,213.21	6,362,361.81
167	57° 23.343' N	-7° -0.937' W	619,276.16	6,362,434.69
168	57° 23.362' N	-7° -0.872' W	619,340.09	6,362,472.28
169	57° 23.371' N	-7° -0.833' W	619,378.98	6,362,489.86
170	57° 23.416' N	-7° -0.554' W	619,656.43	6,362,581.13
171	57° 23.419' N	-7° -0.467' W	619,743.30	6,362,589.65
172	57° 23.416' N	-7° -0.430' W	619,779.85	6,362,585.16
173	57° 23.419' N	-7° -0.347' W	619,863.13	6,362,592.54
174	57° 23.461' N	-7° -0.064' W	620,143.92	6,362,679.07
175	57° 23.463' N	-7° -0.046' W	620,162.48	6,362,683.82
176	57° 23.472' N	-6° -59.952' W	620,255.85	6,362,703.05
177	57° 23.496' N	-6° -59.786' W	620,420.64	6,362,752.08
178	57° 23.531' N	-6° -59.608' W	620,597.63	6,362,821.80
179	57° 23.533' N	-6° -59.594' W	620,610.69	6,362,826.74
180	57° 23.549' N	-6° -59.505' W	620,699.22	6,362,858.79
181	57° 23.553' N	-6° -59.468' W	620,736.04	6,362,868.27
182	57° 23.556' N	-6° -59.431' W	620,772.84	6,362,874.09
183	57° 23.564' N	-6° -59.378' W	620,825.35	6,362,890.02
184	57° 23.610' N	-6° -59.176' W	621,025.29	6,362,982.24
185	57° 23.621' N	-6° -59.103' W	621,097.90	6,363,005.10
186	57° 23.629' N	-6° -59.015' W	621,185.71	6,363,020.87
187	57° 23.650' N	-6° -58.922' W	621,277.60	6,363,063.43
188	57° 23.683' N	-6° -58.844' W	621,353.73	6,363,126.22
189	57° 23.718' N	-6° -58.732' W	621,464.01	6,363,195.23
190	57° 23.730' N	-6° -58.677' W	621,518.15	6,363,219.98
191	57° 23.744' N	-6° -58.598' W	621,596.77	6,363,248.24
192	57° 23.769' N	-6° -58.408' W	621,786.38	6,363,298.98
193	57° 23.773' N	-6° -58.363' W	621,830.34	6,363,308.65
194	57° 23.779' N	-6° -58.287' W	621,906.14	6,363,321.77
195	57° 23.808' N	-6° -58.153' W	622,038.74	6,363,380.26
196	57° 23.839' N	-6° -58.075' W	622,115.10	6,363,439.44
197	57° 23.887' N	-6° -57.859' W	622,328.82	6,363,535.60
198	57° 23.903' N	-6° -57.675' W	622,512.13	6,363,570.14
199	57° 23.915' N	-6° -57.586' W	622,600.98	6,363,595.57
200	57° 23.933' N	-6° -57.493' W	622,693.00	6,363,631.41
201	57° 23.950' N	-6° -57.424' W	622,761.46	6,363,664.26
202	57° 24.005' N	-6° -57.232' W	622,950.08	6,363,773.09
203	57° 24.013' N	-6° -57.210' W	622,972.27	6,363,788.74
204	57° 24.022' N	-6° -57.191' W	622,990.77	6,363,804.47
205	57° 24.036' N	-6° -57.141' W	623,039.88	6,363,832.29
206	57° 24.041' N	-6° -57.109' W	623,071.80	6,363,843.08
207	57° 24.051' N	-6° -57.063' W	623,117.15	6,363,862.72



208	57° 24.093' N	-6° -56.905' W	623,273.37	6,363,946.24
209	57° 24.104' N	-6° -56.859' W	623,318.74	6,363,967.65
210	57° 24.169' N	-6° -56.540' W	623,634.25	6,364,097.58
211	57° 24.177' N	-6° -56.491' W	623,683.00	6,364,114.76
212	57° 24.186' N	-6° -56.429' W	623,744.72	6,364,132.99
213	57° 24.190' N	-6° -56.372' W	623,801.09	6,364,141.19
214	57° 24.189' N	-6° -56.316' W	623,856.89	6,364,141.27
215	57° 24.199' N	-6° -56.228' W	623,945.25	6,364,161.98
216	57° 24.280' N	-6° -55.898' W	624,270.15	6,364,322.62
217	57° 24.293' N	-6° -55.851' W	624,316.50	6,364,348.69
218	57° 24.329' N	-6° -55.738' W	624,427.71	6,364,419.28
219	57° 24.337' N	-6° -55.707' W	624,458.74	6,364,435.35
220	57° 24.411' N	-6° -55.346' W	624,815.42	6,364,582.24
221	57° 24.427' N	-6° -55.203' W	624,957.59	6,364,617.57
222	57° 24.431' N	-6° -55.093' W	625,067.68	6,364,628.24
223	57° 24.441' N	-6° -55.030' W	625,130.58	6,364,649.03
224	57° 24.449' N	-6° -55.005' W	625,154.80	6,364,663.62
225	57° 24.459' N	-6° -54.943' W	625,216.54	6,364,684.29
226	57° 24.468' N	-6° -54.716' W	625,443.07	6,364,708.02
227	57° 24.464' N	-6° -54.658' W	625,501.78	6,364,702.52
228	57° 24.455' N	-6° -54.605' W	625,554.74	6,364,686.64
229	57° 24.451' N	-6° -54.548' W	625,612.29	6,364,681.02
230	57° 24.456' N	-6° -54.409' W	625,751.03	6,364,694.46
231	57° 24.465' N	-6° -54.338' W	625,821.57	6,364,714.84
232	57° 24.473' N	-6° -54.308' W	625,851.28	6,364,729.77
233	57° 24.482' N	-6° -54.249' W	625,909.63	6,364,748.58
234	57° 24.491' N	-6° -54.121' W	626,037.28	6,364,768.93
235	57° 24.493' N	-6° -54.065' W	626,093.75	6,364,774.67
236	57° 24.494' N	-6° -53.889' W	626,269.70	6,364,782.49
237	57° 24.499' N	-6° -53.801' W	626,357.68	6,364,794.29
238	57° 24.505' N	-6° -53.747' W	626,410.73	6,364,806.28
239	57° 24.507' N	-6° -53.728' W	626,429.77	6,364,810.20
240	57° 24.520' N	-6° -53.564' W	626,593.63	6,364,840.58
241	57° 24.522' N	-6° -53.532' W	626,625.04	6,364,845.38
242	57° 24.529' N	-6° -53.398' W	626,759.66	6,364,861.58
243	57° 24.528' N	-6° -53.291' W	626,866.00	6,364,862.99
244	57° 24.514' N	-6° -53.085' W	627,072.91	6,364,843.62
245	57° 24.513' N	-6° -52.980' W	627,178.99	6,364,844.99
246	57° 24.514' N	-6° -52.947' W	627,211.53	6,364,848.89
247	57° 24.515' N	-6° -52.908' W	627,250.77	6,364,852.03
248	57° 24.516' N	-6° -52.841' W	627,317.77	6,364,854.74
249	57° 24.525' N	-6° -52.718' W	627,440.05	6,364,875.07
250	57° 24.544' N	-6° -52.580' W	627,577.10	6,364,915.82
251	57° 24.542' N	-6° -52.488' W	627,669.86	6,364,913.46
252	57° 24.532' N	-6° -52.443' W	627,714.68	6,364,897.61
253	57° 24.528' N	-6° -52.365' W	627,793.01	6,364,891.73
254	57° 24.531' N	-6° -52.326' W	627,832.56	6,364,899.33
255	57° 24.538' N	-6° -52.267' W	627,891.03	6,364,914.27
256	57° 24.541' N	-6° -52.171' W	627,987.00	6,364,922.84
257	57° 24.538' N	-6° -52.122' W	628,036.38	6,364,919.26
258	57° 24.541' N	-6° -52.055' W	628,102.96	6,364,925.65
259	57° 24.550' N	-6° -51.983' W	628,174.19	6,364,944.88
260	57° 24.579' N	-6° -51.888' W	628,268.33	6,365,001.56
261	57° 24.587' N	-6° -51.872' W	628,283.28	6,365,017.60



262	57° 24.611' N	-6° -51.806' W	628,347.92	6,365,063.78
263	57° 24.649' N	-6° -51.636' W	628,516.42	6,365,139.11
264	57° 24.656' N	-6° -51.597' W	628,554.54	6,365,154.31
265	57° 24.664' N	-6° -51.549' W	628,601.97	6,365,171.00
266	57° 24.672' N	-6° -51.512' W	628,639.33	6,365,185.86
267	57° 24.687' N	-6° -51.445' W	628,705.41	6,365,215.27
268	57° 24.696' N	-6° -51.408' W	628,741.24	6,365,234.22
269	57° 24.755' N	-6° -51.219' W	628,927.06	6,365,349.16
270	57° 24.770' N	-6° -51.162' W	628,982.97	6,365,379.02
271	57° 24.831' N	-6° -50.892' W	629,249.85	6,365,500.49
272	57° 24.840' N	-6° -50.836' W	629,305.59	6,365,519.51
273	57° 24.855' N	-6° -50.695' W	629,445.49	6,365,552.34
274	57° 24.898' N	-6° -50.573' W	629,565.19	6,365,634.59
275	57° 24.943' N	-6° -50.512' W	629,623.56	6,365,720.42
276	57° 24.978' N	-6° -50.455' W	629,678.35	6,365,787.62
277	57° 25.043' N	-6° -50.331' W	629,799.06	6,365,911.91
278	57° 25.073' N	-6° -50.278' W	629,850.79	6,365,969.46
279	57° 25.269' N	-6° -49.957' W	630,160.45	6,366,342.04
280	57° 25.309' N	-6° -49.882' W	630,232.34	6,366,419.77
281	57° 25.325' N	-6° -49.850' W	630,263.52	6,366,450.09
282	57° 25.348' N	-6° -49.809' W	630,303.02	6,366,493.28
283	57° 25.624' N	-6° -49.366' W	630,730.50	6,367,019.48
284	57° 25.638' N	-6° -49.347' W	630,748.83	6,367,046.21
285	57° 25.667' N	-6° -49.313' W	630,780.91	6,367,102.24
286	57° 25.694' N	-6° -49.271' W	630,821.61	6,367,152.35
287	57° 25.705' N	-6° -49.245' W	630,846.82	6,367,174.76
288	57° 25.761' N	-6° -49.179' W	630,909.18	6,367,280.80
289	57° 25.772' N	-6° -49.174' W	630,913.77	6,367,301.42
290	57° 25.833' N	-6° -49.096' W	630,987.68	6,367,416.98
291	57° 25.840' N	-6° -49.078' W	631,005.90	6,367,430.88
292	57° 25.864' N	-6° -49.033' W	631,049.19	6,367,476.28
293	57° 25.921' N	-6° -48.955' W	631,123.48	6,367,583.94
294	57° 25.970' N	-6° -48.918' W	631,157.83	6,367,677.04
295	57° 25.999' N	-6° -48.911' W	631,163.36	6,367,730.77
296	57° 26.031' N	-6° -48.893' W	631,179.12	6,367,790.53
297	57° 26.195' N	-6° -48.748' W	631,314.31	6,368,099.09
298	57° 26.214' N	-6° -48.736' W	631,325.95	6,368,134.16
299	57° 26.265' N	-6° -48.710' W	631,348.29	6,368,230.49
300	57° 26.290' N	-6° -48.694' W	631,362.95	6,368,276.50
301	57° 26.334' N	-6° -48.657' W	631,397.22	6,368,360.11
302	57° 26.363' N	-6° -48.644' W	631,408.39	6,368,413.55
303	57° 26.374' N	-6° -48.643' W	631,408.86	6,368,433.85
304	57° 26.382' N	-6° -48.641' W	631,409.98	6,368,449.03
305	57° 26.414' N	-6° -48.632' W	631,417.61	6,368,509.94
306	57° 26.424' N	-6° -48.628' W	631,421.07	6,368,528.24
307	57° 26.455' N	-6° -48.612' W	631,435.53	6,368,585.13
308	57° 26.483' N	-6° -48.604' W	631,441.65	6,368,638.34
309	57° 26.501' N	-6° -48.603' W	631,440.99	6,368,671.57
310	57° 26.522' N	-6° -48.601' W	631,441.77	6,368,711.20
311	57° 26.610' N	-6° -48.586' W	631,451.44	6,368,873.50
312	57° 26.668' N	-6° -48.555' W	631,479.54	6,368,983.57
313	57° 26.773' N	-6° -48.456' W	631,572.29	6,369,180.35
314	57° 26.807' N	-6° -48.404' W	631,621.76	6,369,245.83
315	57° 26.816' N	-6° -48.384' W	631,641.38	6,369,262.93



316	57° 26.849' N	-6° -48.340' W	631,683.79	6,369,324.79
317	57° 26.907' N	-6° -48.296' W	631,723.68	6,369,434.64
318	57° 26.952' N	-6° -48.282' W	631,735.06	6,369,518.63
319	57° 26.967' N	-6° -48.284' W	631,732.85	6,369,546.69
320	57° 27.002' N	-6° -48.276' W	631,738.37	6,369,611.61
321	57° 27.039' N	-6° -48.250' W	631,762.22	6,369,681.29
322	57° 27.053' N	-6° -48.243' W	631,768.46	6,369,706.39
323	57° 27.077' N	-6° -48.234' W	631,775.63	6,369,751.61
324	57° 27.100' N	-6° -48.219' W	631,789.13	6,369,794.23
325	57° 27.152' N	-6° -48.167' W	631,837.93	6,369,893.66
326	57° 27.171' N	-6° -48.154' W	631,850.10	6,369,929.04
327	57° 27.254' N	-6° -48.117' W	631,882.39	6,370,083.42
328	57° 27.294' N	-6° -48.078' W	631,919.26	6,370,159.04
329	57° 27.317' N	-6° -48.041' W	631,954.50	6,370,203.92
330	57° 27.368' N	-6° -48.006' W	631,986.47	6,370,299.70
331	57° 27.393' N	-6° -48.005' W	631,985.52	6,370,345.06
332	57° 27.418' N	-6° -47.997' W	631,992.20	6,370,392.59
333	57° 27.434' N	-6° -47.987' W	632,001.20	6,370,421.64
334	57° 27.468' N	-6° -47.952' W	632,034.65	6,370,485.61
335	57° 27.508' N	-6° -47.889' W	632,095.26	6,370,563.18
336	57° 27.526' N	-6° -47.868' W	632,114.94	6,370,596.47
337	57° 27.546' N	-6° -47.851' W	632,130.71	6,370,633.29
338	57° 27.597' N	-6° -47.758' W	632,220.08	6,370,730.81
339	57° 27.693' N	-6° -47.398' W	632,574.46	6,370,920.74
340	57° 27.701' N	-6° -47.355' W	632,616.95	6,370,937.58
341	57° 27.711' N	-6° -47.278' W	632,693.23	6,370,958.12
342	57° 27.716' N	-6° -47.246' W	632,724.73	6,370,969.51
343	57° 27.731' N	-6° -47.183' W	632,787.38	6,370,998.29
344	57° 27.739' N	-6° -47.126' W	632,843.54	6,371,014.68
345	57° 27.740' N	-6° -47.099' W	632,870.83	6,371,018.44
346	57° 27.756' N	-6° -47.014' W	632,954.83	6,371,050.42
347	57° 27.839' N	-6° -46.766' W	633,197.65	6,371,213.14
348	57° 27.847' N	-6° -46.740' W	633,223.32	6,371,229.24
349	57° 27.876' N	-6° -46.642' W	633,319.22	6,371,285.39
350	57° 27.884' N	-6° -46.619' W	633,341.52	6,371,300.56
351	57° 27.934' N	-6° -46.491' W	633,466.69	6,371,398.65
352	57° 27.954' N	-6° -46.348' W	633,608.42	6,371,440.39
353	57° 27.922' N	-6° -45.872' W	634,085.93	6,371,396.37
354	57° 27.910' N	-6° -45.776' W	634,182.43	6,371,377.77
355	57° 27.867' N	-6° -45.532' W	634,428.94	6,371,304.53
356	57° 27.860' N	-6° -45.488' W	634,473.44	6,371,293.50
357	57° 27.842' N	-6° -45.349' W	634,613.59	6,371,265.52
358	57° 27.834' N	-6° -45.307' W	634,656.24	6,371,251.89
359	57° 27.828' N	-6° -45.284' W	634,679.02	6,371,241.68
360	57° 27.814' N	-6° -45.241' W	634,723.44	6,371,217.05
361	57° 27.801' N	-6° -45.206' W	634,759.46	6,371,192.89
362	57° 27.719' N	-6° -45.095' W	634,874.57	6,371,045.43
363	57° 27.352' N	-6° -44.875' W	635,117.19	6,370,371.89
364	57° 27.350' N	-6° -44.876' W	635,116.90	6,370,367.85
365	57° 27.346' N	-6° -44.880' W	635,113.29	6,370,361.02



Figure 2: Ardmore on Isle Skye and Loch Pooltiel on Isle of Skye Cable route Overview

Table 5: Ardmore on Isle Skye and Loch Pooltiel on Isle of Skye Cable route position

Point	Latitude (Degree)	Longitude (Degree)	Easting (m)	Northing (m)
SIL	WGS84		WGS84 UTM Zone 29N	
1	57° 33.183' N	-6° -38.720' W	640,895.55	6,381,395.26
2	57° 32.650' N	-6° -38.307' W	641,341.34	6,380,421.72
3	57° 32.551' N	-6° -38.293' W	641,362.59	6,380,237.19
4	57° 32.329' N	-6° -38.391' W	641,278.43	6,379,822.25
5	57° 32.178' N	-6° -38.573' W	641,107.17	6,379,536.42
6	57° 32.035' N	-6° -38.917' W	640,773.30	6,379,260.15
7	57° 31.945' N	-6° -39.809' W	639,888.42	6,379,061.66
8	57° 32.011' N	-6° -40.229' W	639,465.99	6,379,169.50
9	57° 32.030' N	-6° -40.297' W	639,396.32	6,379,202.65
10	57° 32.158' N	-6° -40.597' W	639,089.21	6,379,430.42
11	57° 32.188' N	-6° -40.645' W	639,039.43	6,379,483.98
12	57° 32.211' N	-6° -40.670' W	639,012.64	6,379,526.24
13	57° 32.250' N	-6° -40.741' W	638,939.89	6,379,594.52

14	57° 32.322' N	-6° -40.968' W	638,708.80	6,379,721.25
15	57° 32.337' N	-6° -41.055' W	638,621.17	6,379,745.71
16	57° 32.361' N	-6° -41.644' W	638,032.33	6,379,770.89
17	57° 32.271' N	-6° -42.279' W	637,403.88	6,379,582.32
18	57° 31.995' N	-6° -43.042' W	636,660.61	6,379,045.19
19	57° 31.963' N	-6° -43.143' W	636,561.71	6,378,982.20
20	57° 31.799' N	-6° -43.737' W	635,979.69	6,378,657.84
21	57° 31.720' N	-6° -43.843' W	635,878.50	6,378,507.14
22	57° 31.640' N	-6° -43.866' W	635,860.64	6,378,359.42
23	57° 31.585' N	-6° -43.915' W	635,814.80	6,378,254.29
24	57° 31.532' N	-6° -44.004' W	635,729.12	6,378,152.95
25	57° 31.498' N	-6° -44.118' W	635,618.01	6,378,086.47
26	57° 31.477' N	-6° -44.334' W	635,403.74	6,378,040.88
27	57° 31.437' N	-6° -44.457' W	635,283.28	6,377,962.45
28	57° 31.220' N	-6° -44.769' W	634,984.99	6,377,549.91
29	57° 31.187' N	-6° -44.802' W	634,954.54	6,377,486.90
30	57° 31.123' N	-6° -44.839' W	634,920.99	6,377,367.71
31	57° 31.089' N	-6° -44.873' W	634,889.57	6,377,303.36
32	57° 30.738' N	-6° -45.387' W	634,398.09	6,376,635.39
33	57° 30.631' N	-6° -45.516' W	634,276.41	6,376,432.13
34	57° 30.460' N	-6° -45.680' W	634,122.65	6,376,109.33
35	57° 30.436' N	-6° -45.701' W	634,102.76	6,376,064.81
36	57° 30.368' N	-6° -45.759' W	634,049.45	6,375,937.21
37	57° 30.343' N	-6° -45.782' W	634,028.18	6,375,889.81
38	57° 29.972' N	-6° -46.141' W	633,691.82	6,375,189.43
39	57° 29.963' N	-6° -46.149' W	633,684.44	6,375,172.01
40	57° 29.925' N	-6° -46.178' W	633,658.14	6,375,100.64
41	57° 29.895' N	-6° -46.217' W	633,621.03	6,375,044.07
42	57° 29.864' N	-6° -46.281' W	633,558.92	6,374,984.71
43	57° 29.840' N	-6° -46.315' W	633,526.31	6,374,939.03
44	57° 29.821' N	-6° -46.333' W	633,509.62	6,374,902.81
45	57° 29.785' N	-6° -46.349' W	633,495.92	6,374,835.69
46	57° 29.749' N	-6° -46.349' W	633,497.83	6,374,769.83
47	57° 29.702' N	-6° -46.370' W	633,479.62	6,374,680.48
48	57° 29.681' N	-6° -46.390' W	633,461.47	6,374,641.02
49	57° 29.635' N	-6° -46.443' W	633,411.14	6,374,555.24
50	57° 29.605' N	-6° -46.487' W	633,369.23	6,374,497.78
51	57° 29.564' N	-6° -46.536' W	633,322.12	6,374,418.88
52	57° 29.435' N	-6° -46.661' W	633,205.90	6,374,175.95
53	57° 29.400' N	-6° -46.714' W	633,154.65	6,374,109.56
54	57° 29.285' N	-6° -46.984' W	632,892.47	6,373,887.80
55	57° 29.259' N	-6° -47.027' W	632,850.37	6,373,838.39
56	57° 28.942' N	-6° -47.410' W	632,487.64	6,373,236.94
57	57° 28.752' N	-6° -47.484' W	632,425.07	6,372,882.92
58	57° 28.701' N	-6° -47.468' W	632,443.52	6,372,788.39
59	57° 28.657' N	-6° -47.462' W	632,452.54	6,372,708.16
60	57° 28.503' N	-6° -47.462' W	632,461.46	6,372,421.97
61	57° 28.481' N	-6° -47.467' W	632,458.47	6,372,380.72
62	57° 28.295' N	-6° -47.539' W	632,396.82	6,372,034.07
63	57° 28.277' N	-6° -47.544' W	632,393.73	6,371,999.05
64	57° 28.213' N	-6° -47.548' W	632,393.73	6,371,880.67
65	57° 28.178' N	-6° -47.539' W	632,404.34	6,371,816.40

66	57° 28.111' N	-6° -47.501' W	632,446.00	6,371,693.64
67	57° 28.067' N	-6° -47.453' W	632,497.34	6,371,613.19
68	57° 28.030' N	-6° -47.385' W	632,567.67	6,371,546.10
69	57° 27.998' N	-6° -47.267' W	632,686.78	6,371,491.71
70	57° 27.985' N	-6° -47.074' W	632,880.92	6,371,473.24
71	57° 27.971' N	-6° -46.998' W	632,957.42	6,371,449.90
72	57° 27.946' N	-6° -46.918' W	633,038.95	6,371,405.62
73	57° 27.936' N	-6° -46.754' W	633,203.12	6,371,393.56
74	57° 27.961' N	-6° -46.615' W	633,340.75	6,371,443.92
75	57° 27.969' N	-6° -46.561' W	633,394.59	6,371,460.25
76	57° 27.996' N	-6° -46.320' W	633,633.27	6,371,518.20
77	57° 27.992' N	-6° -46.214' W	633,740.04	6,371,514.77
78	57° 27.953' N	-6° -46.005' W	633,950.87	6,371,448.98
79	57° 27.940' N	-6° -45.904' W	634,053.25	6,371,428.45
80	57° 27.918' N	-6° -45.581' W	634,377.16	6,371,398.15
81	57° 27.915' N	-6° -45.555' W	634,403.10	6,371,393.99
82	57° 27.874' N	-6° -45.267' W	634,693.40	6,371,327.63
83	57° 27.834' N	-6° -45.157' W	634,806.27	6,371,256.00
84	57° 27.777' N	-6° -45.080' W	634,886.50	6,371,153.59
85	57° 27.711' N	-6° -45.027' W	634,943.56	6,371,031.99
86	57° 27.529' N	-6° -44.966' W	635,015.83	6,370,697.82
87	57° 27.509' N	-6° -44.956' W	635,026.81	6,370,659.55
88	57° 27.356' N	-6° -44.864' W	635,127.74	6,370,379.42
89	57° 27.354' N	-6° -44.865' W	635,127.45	6,370,375.38
90	57° 27.345' N	-6° -44.874' W	635,118.41	6,370,358.31